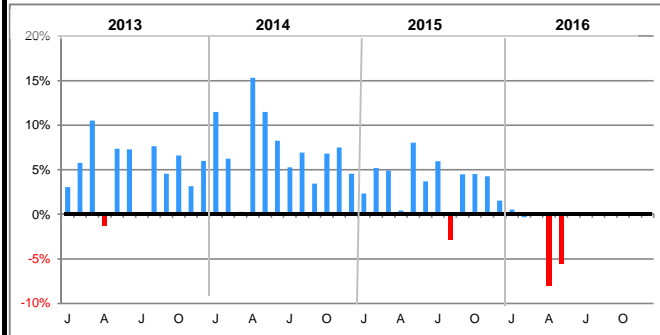


# The United States National Tourism Office Travel & Tourism Dashboard

The U.S. Department of Commerce, Department of Homeland Security, and Department of State prepare this dashboard to provide performance indicators for international travel to the United States and travel facilitation programs.

## International Travelers to the USA

(% change same month previous year)

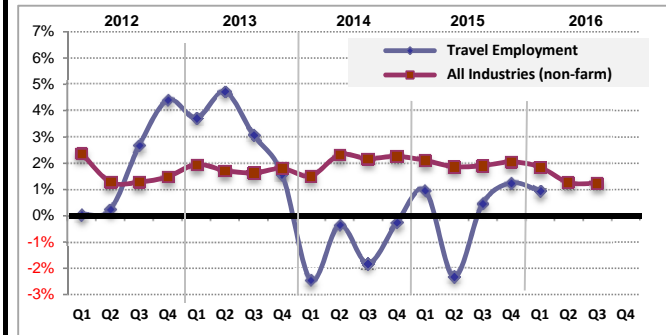


Sources: Department of Homeland Security I-94 record of arrivals; Statistics Canada; Banco de Mexico.

Notes: International traveler volume excludes day trips, and for countries requiring visas, includes visitors traveling on one of 14 specific visa types. March and April changes reflect changes in the timing of Easter / Passover.

## EMPLOYMENT: Travel Industry vs. All Industries

(quarterly change rate of annualized/seasonally-adjusted data)

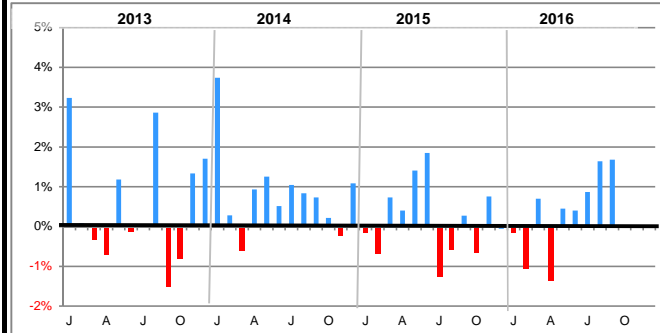


Sources: U.S. Department of Commerce, Bureau of Economic Analysis (travel employment); U.S. Department of Labor, Bureau of Labor Statistics (all industries).

Notes: Travel employment reflects annualized total travel employment (direct employment plus indirect employment). Total employment is seasonally adjusted.

## International Traveler Spending in the USA (exports)

monthly change rate of annualized/seasonally-adjusted data

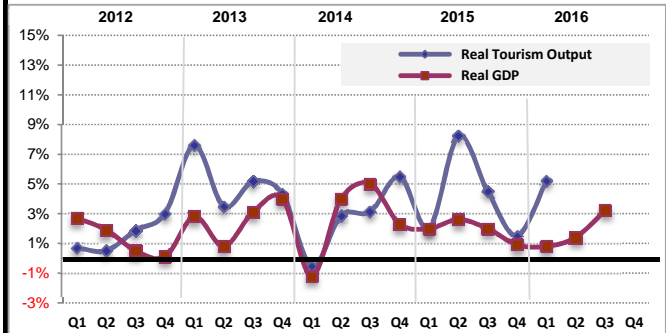


Source: U.S. Department of Commerce; Bureau of Economic Analysis.

Notes: Spending includes both spending within the USA and passenger fares to travel to the USA on US carriers (both exports).

## OUTPUT: Travel Industry vs. All Industries

(quarterly change rate of annualized data)

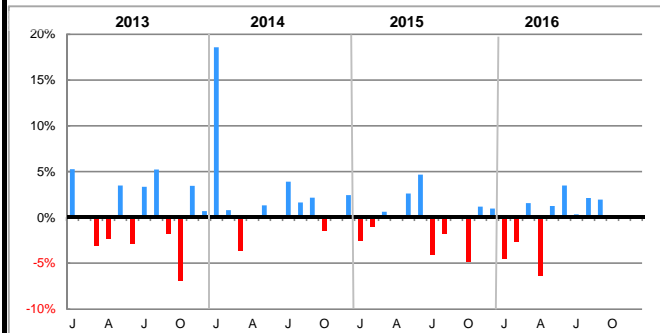


Source: U.S. Department of Commerce, Bureau of Economic Analysis.

Notes: Both output measures are subject to revision. Real Tourism Output includes direct plus indirect tourism output.

## Travel Trade Balance

monthly change rate of annualized/seasonally-adjusted data

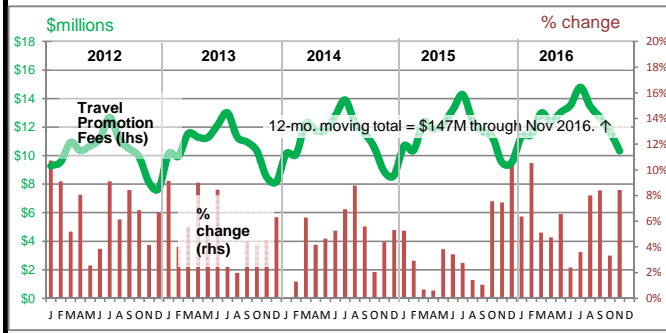


Source: U.S. Department of Commerce; Bureau of Economic Analysis.

Notes: Spending includes spending within the USA + passenger fares to travel to the USA. Changes reflect the interplay between export travel spending and passenger fares and import travel spending and passenger fares (4 items).

## ESTA Travel Promotion Fees Collected

(lhs: \$millions; rhs: % change same month previous year)



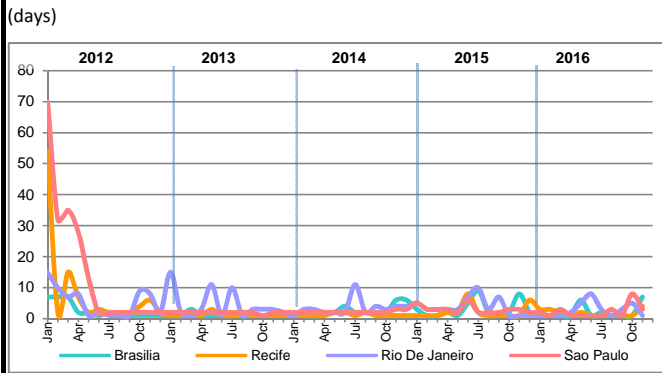
Source: U.S. Department of Homeland Security; Customs and Border Protection.

Notes: Fees reflect the \$10 portion of the \$14 ESTA application fee per traveler for approved applications ("Adjusted Travel Promotion Classification"). Fee began in September 2010.

# The United States National Tourism Office Travel & Tourism Dashboard

The U.S. Department of Commerce, Department of Homeland Security, and Department of State prepare this dashboard to provide performance indicators for international travel to the United States and travel facilitation programs.

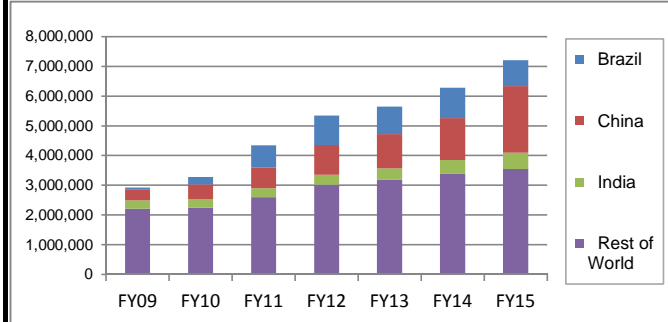
## Visa Interview Wait Time: BRAZIL



Source: U.S. Department of State; Bureau of Consular Affairs.  
Notes: See note at the bottom of this page for an explanation of visa interview wait time.

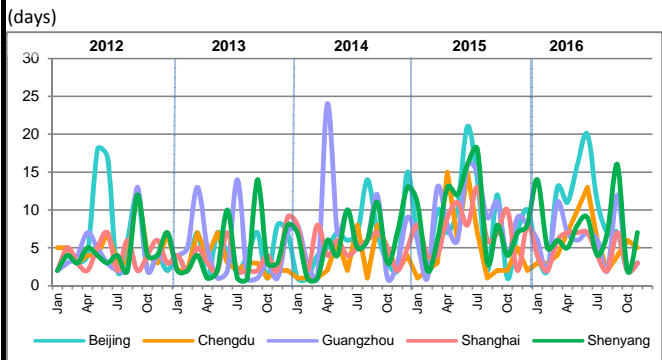
## B1/B2 Short-Term Tourist and Business Travel Visas Issued

(number of B1/B2 travel visas issued in fiscal year in China, Brazil, India, and the remainder of visa-issuing posts worldwide)



Source: U.S. Department of State; Bureau of Consular Affairs.  
Notes: The graph above represents the number of B1/B2 visas issued in fiscal years 2009–2014 in China, Brazil, India, and worldwide.

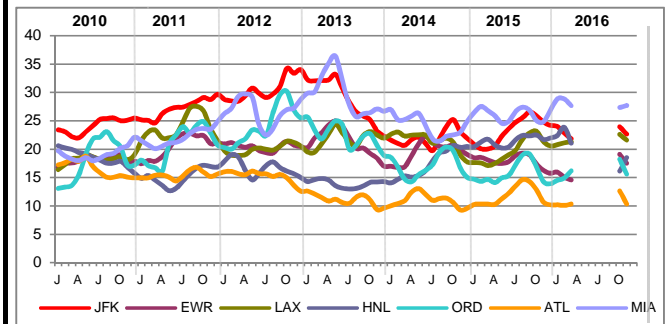
## Visa Interview Wait Time: CHINA



Source: U.S. Department of State; Bureau of Consular Affairs.  
Notes: See note at the bottom of this page for an explanation of visa interview wait time.

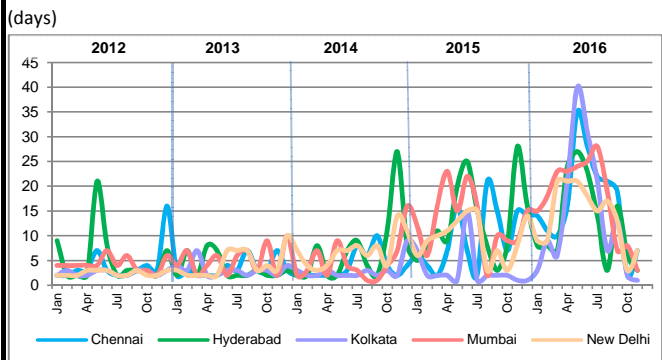
## International Arrivals Processing Times by Port of Entry

(3-month moving average (unweighted), in minutes)



Source: U.S. Department of Homeland Security; Customs and Border Protection.  
Notes: CBP recommends travelers consult the CBP website [http://www.cbp.gov/xp/cgov/travel/wait\\_times/](http://www.cbp.gov/xp/cgov/travel/wait_times/) for relevant information about wait times.

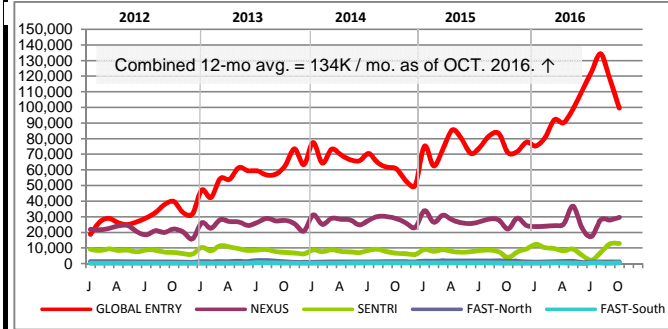
## Visa Interview Wait Time: INDIA



Source: U.S. Department of State; Bureau of Consular Affairs.  
Notes: See note at the bottom of this page for an explanation of visa interview wait time.

## Trusted Traveler Programs Enrollment Applications

(number applications by month)



Source: U.S. Department of Homeland Security; Customs and Border Protection.

**NOTE:** Interview wait time data is a monthly snapshot of the wait time on the latest available day of the month. Wait times present in this graph do not reflect current interview wait time at these posts, nor are reflective of an average wait time at these posts. Interview wait times vary weekly, or multiple times per week, depending on post management of interview appointment slots, staffing, demand, resources, or events that require consular section resources to be redirected to the provision of assistance to American citizens.

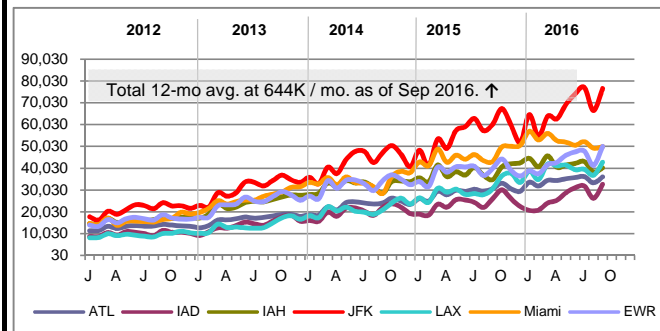
# The United States National Tourism Office

## Travel & Tourism Dashboard

The U.S. Department of Commerce, Department of Homeland Security, and Department of State prepare this dashboard to provide performance indicators for international travel to the United States and travel facilitation programs.

### Trusted Traveler Program Airport Kiosk

(number of travelers using kiosk by airport)



Source: U.S. Department of Homeland Security; Customs and Border Protection.

### Travel Forecast

(% change previous year)

		Total USA	Brazil	China	India
Actual	2012	6.1%	19%	35%	9%
Actual	2013	4.7%	15%	23%	19%
Actual	2014	6.8%	10%	21%	12%
Actual	2015	3.3%	-2%	18%	17%
Forecast	2016	-0.9%	-17%	16%	11%
Forecast	2017	2.4%	-6%	15%	9%
Forecast	2018	4.1%	-1%	15%	7%
Forecast	2019	4.9%	3%	14%	9%
Forecast	2020	4.9%	5%	13%	10%
Forecast	2021	4.5%	6%	12%	11%

Source: U.S. Department of Commerce, National Travel and Tourism Office.

Fall 2016 forecast.

Notes: The travel forecast is prepared semi-annually, typically in May and October. Due to changes in volume methodology, 2014-2021 forecast metrics are not comparable to earlier years and are higher to an unknown extent than otherwise would have been.

### Airline Capacity (available seats)

(% change previous year)

	Brazil	China	India	S. Korea	Japan	UK	Germany	France
2016-02	-7%	29%	11%	7%	4%	14%	8%	1%
2016-03	-16%	31%	10%	6%	-2%	11%	4%	2%
2016-04	-21%	36%	8%	1%	-4%	8%	3%	1%
2016-05	-24%	33%	12%	1%	-2%	6%	3%	2%
2016-06	-26%	28%	12%	3%	-1%	6%	6%	1%
2016-07	-26%	18%	13%	1%	-3%	5%	6%	-2%
2016-08	-21%	22%	10%	-1%	-4%	6%	6%	1%
2016-09	-27%	24%	12%	0%	-5%	7%	6%	4%
2016-10	-28%	26%	13%	-3%	-3%	5%	5%	3%
2016-11	-27%	20%	14%	-4%	-8%	3%	4%	-4%
2016-12	-28%	19%	12%	-14%	-12%	3%	5%	0%
2017-01	-26%	13%	10%	-17%	-10%	2%	3%	1%
2017-02	-25%	13%	8%	-18%	-15%	0%	5%	4%

Source: U.S. Department of Transportation; FAA / INNOVATA, Inc. (2016-10-31)

Notes: Airline capacity reflects the planned total seat capacity airlines expect to offer in the upcoming months. Change in seat capacity is subject to normal changes in supply and demand and country-to-country air agreements. Forecasted months have purple-colored shading.